

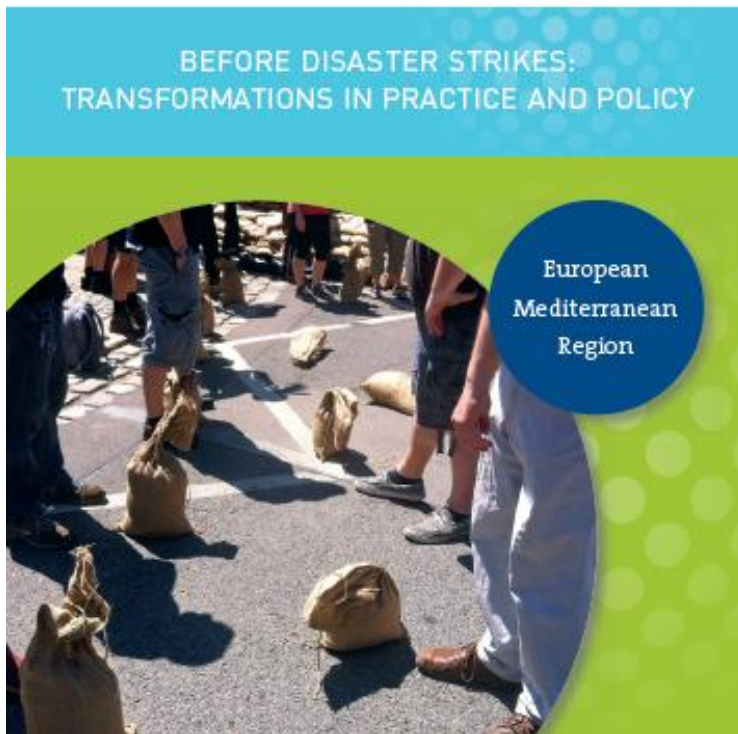


# CATALYST

## Best practices European Mediterranean Region



# Five best practices (BP 1 – 5)



- **BP 1:** building a stronger institutional foundation
- **BP 2:** assuming leadership
- **BP 3:** integrating flood and drought management
- **BP 4:** enhancing preparedness to earthquakes
- **BP 5:** integrating local and scientific knowledge



## Think Tank members discuss Best Practices in DRR and CCA during **CATALYST Online process** and by meeting face to face in **regional workshop**

**Think Tank members** include governmental organisations, NGO's and scientific Community. Some operate across entire region, others on community level:

Name	Organisation + Acronym	Country	email	networks
<a href="#">Nicola Lamaddalena</a>	CIHEAM Mediterranean Agronomic Institute, Italy	IT	lamaddalena@iamb.it	<a href="#">research</a>
<a href="#">Jeroen Warner</a>	WUR-DSG Wageningen University – Disaster NL Studies Group	NL	jeroen.warner@wur.nl	<a href="#">research</a>
<a href="#">Elena Lopez-Gunn</a>	UCM Universidad Complutense de Madrid	ES	elopezgunn@gmail.com	<a href="#">research</a>
<a href="#">Mark Mulligan</a>	KINGs King's College	GB	mark.mulligan@kcl.ac.uk	<a href="#">research</a>
<a href="#">Frank van Weert</a>	WI Wetlands International	NL	Frank.vanWeert@wetlands.org	Research / multiple
<a href="#">Richard Teeuw</a>	PORT University of Portsmouth	GB	richard.teeuw@port.ac.uk	<a href="#">research</a>
<a href="#">Maria Manez</a>	CSC Climate Services Centre	D	Maria.Manez@hzg.de	<a href="#">research</a>
<a href="#">Laura Calcagni</a>	IDRAN Engineering & Technology	IT	lcalcagni@idran.net	Research / <a href="#">enterprises</a>
<a href="#">Ian Christoplos</a>	GLEMDEV Glemminge Development Research	S	ian@glemdev.com	Research / multiple
<a href="#">Gerd Tetzlaff</a>	DKKV German Committee for Disaster Reduction	D	tetzlaff@uni-leipzig.de	Research / multiple
<a href="#">Ebru Gencer</a>	Urban Planning Program and Urban Design Lab at Columbia University	USA	ebru.gencer@gmail.com	multiple
<a href="#">Radhika Murti</a>	IUCN International Union for Conservation of Nature	CH	Radhika.MURTI@iucn.org	CEM, ELAN
<a href="#">Karen Sudmeier-Rieux</a>	IUCN International Union for Conservation of Nature	CH	karen.sudmeier@gmail.com	CEM, ELAN
<a href="#">Fernando Nardi</a>	IDRAN Ingegneria e Tecnologia S.r.l, Italy	IT	fnardi@idran.net	Research / <a href="#">enterprises</a>
<a href="#">Luis Sa</a>	Autoridade Nacional de Protecção Civil (ANPC), Portugal		luis.sa@proci.pt	Multiple / Govt
<a href="#">Maike Vollmer</a>	UNU Institute for Environment and Human Security (UNU-EHS), Germany		mvollmer@ehs.unu.edu	UN / <a href="#">research</a>
<a href="#">Umberto Fratino</a>	European Innovation Partnership for Water, Italy	IT	u.fratino@poliba.it	EU / <a href="#">research</a>
<a href="#">Vito Iacobellis</a>	Polytechnic Bari, Italy	IT	v.iacobellis@poliba.it	Research
<a href="#">Ivan Portoghese</a>	Water Research Institute of the Italian National Research Council, Italy	IT	ivan.portoghese@ba.irsa.cnr.it	Research
<a href="#">Luca Limongelli</a>	Regional Department of Civil Protection, Italy.	IT	l.limongelli@regione.puglia.it	Research / multiple
<a href="#">Raffaele Giordano</a>	Water Research Institute of the Italian National Research Council, Italy	IT	raffaele.giordano@ba.irsa.cnr.it	Research / Govt
<a href="#">Pierluigi Loiacono</a>	Regional Department of Civil Protection, Italy.	IT	p.loiacono@regione.puglia.it	Multiple / Govt



# BP 1: building a stronger institutional foundation

- The European Mediterranean Region:
  - high development standards
  - needs to strengthen institutional approach to disaster risk reduction and climate change adaptation at local and national level
- Integration of policies at all levels are needed
- Focus on the implementation and enforcement of existing legislation



# BP 2: assuming leadership

- Leadership is critical for communication, launching and maintaining new measures
- Risk reduction and climate change adaptation do not receive enough attention and resources (obstacle )
- Strong leadership may be derived from public-private partnerships (synergy: scientific community <> public authorities)



# BP 3: integrating flood and drought management

- Drought and flood hazards interact and pose *multiple hazards* to society (droughts aggravate risks of flash flooding)
- There is a need to manage these two hazards together, i.e. to adopt long-term and integrative, preventative strategies
- Purely structural measures is not enough. Implementation of nonstructural approaches needed, due to increased flooding and drought risks
- Building on leadership through multi-sectoral collaboration is necessary



# BP 4: enhancing preparedness to earthquakes



- Europe has many urban areas endowed with robust infrastructure for dealing with disasters, e.g. fire brigades, police, hospitals
- When a major disaster occurs these services are often overwhelmed.
- Comprehensive planning and preparation are essential for reducing casualties and damage
- There is much untapped potential for more widespread and effective response to earthquake events. Citizen training and awareness raising programmes are often inexpensive and easy to implement

# BP 5: integrating local and scientific knowledge

- Hazards require mechanisms and procedures that facilitate the sharing of knowledge across administrative levels, and between sectors and geographic regions
- Knowledge is generated by scientific and governmental organizations
- Local knowledge is a critical element, so integrating monitoring and early warning systems is important
- For drought, people-centered monitoring has proven to provide reliable data, e.g. data from remote sensing and data assimilation is combined with data collected at community level and scientific information to improve risk and adaptation measures





# Take home messages

- 1. Strong institutional foundations are the key
- 2. Leadership is a powerful tool
- 3. Success stems from integrating approaches
- 4. Earthquakes need preparedness
- 5. Scientific and local knowledge must both be taken into account

